

March 25

Edition 2

## Fordingbridge Greener Living Newsletter

**FORDINGBRIDGE  
GREENER LIVING**



**fordingbridgegreenerliving.org**

Dear Fordingbridge Greener Living Friends,

Welcome to our second newsletter. In this newsletter, we will be updating you as to what we've been up to since the last newsletter and looking forward to events coming up.

*Fordingbridge Greener Living Committee*

---

### Purpose

**To develop Fordingbridge into a greener town by delivering sustainable and environmentally friendly projects and sharing 'greener' methods and positive ideas which educate and encourage community involvement at all levels for the future benefit of this town and its environs.**

### Focus On

We thought it would be interesting to give you a bit more information about some of our projects particularly in response to questions we get asked. This newsletter we want to let you know about the Bra recycling, which is part of the shed initiative.

### *Community Recycling Shed*

**Bras** in any condition are collected in one of the boxes in the recycling shed and they are collected by Christine. Christine takes them to 'Sassy's' in Ringwood from where they are sent to 'Against Breast Cancer'. The charity is funding research into a breast cancer vaccine and receives £700 for each ton of bras it receives. The bras are saved from landfill and then sold to a company that exports them to developing countries in Africa and around the world.

According to Sassy's website, the bras are then sold to small market traders, predominantly women, thus promoting their financial independence and helping the local economy. The women who buy the



bras can do so affordably and, in some countries, simply wearing a bra signifies status and wealth and women wearing a bra are less likely to be attacked or abused. We are so pleased to be able to support this hugely important venture.

<https://sassys.co.uk/community/>

<https://www.againstbreastcancer.org.uk/recycling/bra-recycling>

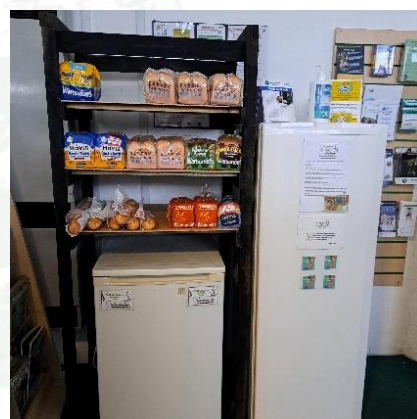
## *Project News*

### *Community Fridge and Freezer*

We recently approached the Avon Valley Shed for them to produce some shelves around the Fridge in the Library to house the ambient products donated. The Shed volunteers have produced shelves which are now in situ and enable a much improved look to the Fridge area. We thank the members of the Shed for their help and quick response to our request.

One of the objectives of the Community Fridge is to prevent food from going to waste, so if you know of any sources of food, please do get in touch.

The Community Fridge is run by a fantastic loyal group of volunteers although more help is needed at the moment. The role involves collecting food from participating shops and taking it to Fordingbridge Library to the Fridge. We usually collect food in the morning before the Library opens, and each visit takes approximately 30 mins. For more details, contact Alison Ayling on 07798 555500 or email [Fordingbridgegreenerliving@gmail.com](mailto:Fordingbridgegreenerliving@gmail.com)



#### **Opening Hours:**

Monday: closed

Tuesday: 09.30 – 5.00

Wednesday: 9.30 – 5.00

Thursday: closed

Friday: 9.30 – 5.00

Saturday: 9.30 – 1.30

Sunday: closed

### *Community Garden and Orchard*

As the days begin to lengthen, cheerful birdsong can be heard and the sun returns (we can but hope) I invite you all to come and visit Fordingbridge Community Gardens.. Where is the Community Garden I hear you ask? It is in Fordingbridge Allotments, Fry's Field, Picket Close and is best accessed by entering via the gates by the garages and turning right and walk as far as you can. A Clue that you have arrived is that the garden is surrounded by fencing and has a gate into it.



Recently a second shed has been erected as our tool storage area allowing the main shed to be used as a workspace, a place to hold workshops, be joined by local groups with members of all ages or for gardeners sheltering from the elements

### Our sheds

The apple tree has been pruned since this photo

We are adopting a No Dig Policy and have more raised beds and hope to have more as the season goes on. We have a bed set aside for Rhubarb as this seemed very popular and an addition of some mature blackcurrant bushes which have been donated. We plan to continue growing our usual crops including vegetables, potatoes, salad items and hope to be more productive minus the backbreaking weeding. We are adding a cut flower bed as flowers brighten people's lives and can be given as small gifts, acts of kindness. A herb bed by the pond should encourage the pollinators to visit our "patch"



### Our Rhubarb patch



We are trialling re-commencing our monthly work parties on the first Saturday of each month from 10-12.30 (weather dependant) commencing on Saturday 1<sup>st</sup> March. We will review this in June when we may add additional evening "work parties" if the weather looks promising. We would be delighted if anyone wants to join us for these sessions.

We are working to establish links with local groups and have recently linked with "The Branch" at their breakfast café held over half term. We provided small packets including seeds for the attendees to take home and germinate for us and we hope that they will then return some of the crops to us for planting in the Community Garden. If anyone would like more information about the Community Garden or would like to join us on our working parties please email via the Fordingbridge Greener Living email.

The Community Garden is located at the following address and can be accessed via the gate next to the garages in Picket Close at the back of the allotments, all volunteers welcome.

Fry's Field,  
Picket Close,  
Fordingbridge,  
SP6 1JY



## Repair Cafe and blister pack recycling



### Blister Pack Recycling Scheme

We are pleased to announce that our first blister pack collection event was extremely successful!

Our next event will be on

**Saturday 15th March 2025 at 10am-12noon**  
in Avonway Annexe, alongside the Repair Cafe

A reminder that empty, mixed material (plastic and foil) medication blister packs, will be accepted, with a minimum donation of £1 per 50 packs, as this recycling scheme costs over £100 per box. Your help is much appreciated.



We are delighted to have teamed up with SpURT Salisbury and the Fordingbridge Surgery to offer medicine blister pack recycling. In February we collected over 3200 blister packs and we aim to offer this at each Repair Café. The blister packs are sent to MyGroup in Hull where they are industrially shredded, the materials separated and then recycled. The cost of this is £108 per box so we are asking for donations to enable us to offer this sustainably going forward. We know how frustrating it is that blister pack recycling schemes start up and then close down. The cost is approximately £1/50 packs.

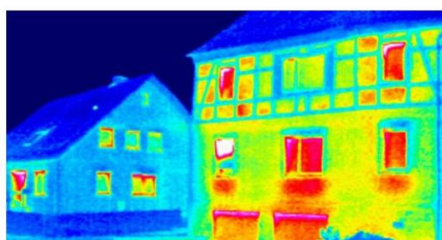
**For more information see [spurt.uk](http://spurt.uk)**

The Repair Cafe is held at the **Avonway Community Centre, The Annex on the 3<sup>rd</sup> Saturday of each month between 10:00 – 12:00.**

Please note we have had to close the children's clothes swap as this is now being offered by the Salvation Army.

## Community Energy

Community Energy Fordingbridge, working alongside Community Energy New Forest (CENF), and Community Energy South has been running since early 2023. We comprise a small group of local enthusiasts encouraging local sustainable and renewable energy solutions which will have a positive impact on Fordingbridge and our surrounding villages and help our community towards net zero.



We hired thermal imaging cameras again this winter from the New Forest Home Energy Advice Team ([theheatproject.org.uk](http://theheatproject.org.uk)) and offered local residents the opportunity to have thermal surveys of their homes. It proved very revealing and we have carried out twelve or so surveys this winter.

Several local community/business premises which might benefit from solar have been identified and we hope that The Avonway Centre and the Co-op in Fordingbridge (and possibly other local Co-op shops) might be installing solar panels in the near future. Funding arrangements available for installing solar on commercial/community buildings are available.

There are many organisations that can provide information and advice about saving energy and reducing your household or business energy bills. [www.energysavingtrust.org.uk](http://www.energysavingtrust.org.uk) and [environmentcentre.com](http://environmentcentre.com) can offer advice to households on how to save energy and save money. Also the local Home Energy Advice Team can also offer information and advice on saving energy. **Any local residents who wish to get involved or find out more, can contact [fordingbridgegreenerliving@gmail.com](mailto:fordingbridgegreenerliving@gmail.com)**



## *River Avon Bathing Water Status – update February 2025*

Fordingbridge Greener Living along with FLOW (For the Love of Water) CIC welcomed over 40 people to Avonway in Fordingbridge on the 18<sup>th</sup> February to hear an update on the quality of the water in the River Avon in Fordingbridge which is a designated Bathing Area.

Guest speakers Jim Flory, Area Environment Manager from the Environment Agency, and Matt Wheeldon, Director of Infrastructure Development at Wessex Water, presented results of tests by their respective organisations over the last bathing season.



### **Environment Agency**

Jim Flory began by explaining that statutory testing is for faecal bacteria only, specifically E-Coli and Intestinal Enterococci. Overall, the testing for the season has resulted in a classification of 'Poor' water quality. The next step is for the Environment Agency to investigate the sources of the pollution and then to work on reducing it. They are clear that the pollution is most likely to be human sewage, the main sources of which are likely to be Salisbury and Downton, although there are small amounts from most of the villages. Private septic tanks can be source of pollution.

There is a direct correlation between high rainfall and sewage pollution and the Environment Agency is developing models to help become more predictive of water quality.

### **Wessex Water**

Matt Wheeldon explained that Wessex Water deals with a very large Avon catchment area with many rivers feeding into the Avon before it gets to Fordingbridge. The main issue affecting sewage outflows is the high groundwater levels. This can fill sewage pipes leading them to overflow into the river. Again, there is a very high correlation with high rainfall, which not only leads to short term pollution events but also longer term as the groundwater struggles to seep away.

Wessex Water's investment in the next 5 years will include:

- Sealing drains and sewers where they can
- Nature based solutions for the treatment plants (reed beds) which will clean the water more thoroughly before it goes into the river
- Storage to hold rainfall
- Continuous monitoring to better understand correlation and causations
- Phosphorus removal

A continuous monitoring probe has been installed at The George pub which will use AI to learn about river conditions, test the water and eventually become predictive of conditions and be able to give very accurate real time monitoring of pollution levels. This will help anyone using the river to make an informed decision about whether to enter the water or not.

Adam Ellis of FLOW CIC commented that it is 'inspiring to see so many people interested in the river's health'.

## Dates for the Diary

### Repair Cafe/Blister pack recycling

19<sup>th</sup> April 2025

17<sup>th</sup> May 2025

21<sup>st</sup> June 2025



### Visit to Barry Deakin's Elf Cup Woodland

27<sup>th</sup> April 10am and 2pm

Meet at layby between Sandheath and Damerham

## Reminders

### Easy Fundraising

With Easy Fundraising, every time you buy something online from a supplier who is part of the scheme, a donation will be given to your chosen charity. In the year we raised £139 from supporters, just buying what they need via Easy Fundraising. Do sign up.

[www.easyfundraising.org.uk](http://www.easyfundraising.org.uk)

### Tetrapak recycling



A reminder that we also have a Tetrapak recycling bin in Fordingbridge located in the car park opposite the Recreation Ground. This is managed by NFDC who has now rolled the scheme out to other towns in the district.

### The Green Gram – Community Refill Shop

23 High Street, Fordingbridge

[www.thegreengram.org](http://www.thegreengram.org)

Green Gram provides affordable plastic-free groceries offering a wide range of wholefoods, loose leaf teas and whole bean coffees, eco-friendly detergents and toiletries, as well as a selection of household products.

Everything is supplied without single use plastic packaging so you can buy as much or as little as you need! Customers are encouraged to bring their own containers to refill, but a selection of donated jars and bottles are available.



## Contact Details

Email : [fordingbridgegreenerliving@gmail.com](mailto:fordingbridgegreenerliving@gmail.com)

Facebook: <https://www.facebook.com/groups/1321462448635262>

Instagram: <https://www.instagram.com/fordingbridgegreenerliving/>

Website: [www.fordingbridgegreenerliving.org](http://www.fordingbridgegreenerliving.org)

Next Newsletter Edition : August 2025.

